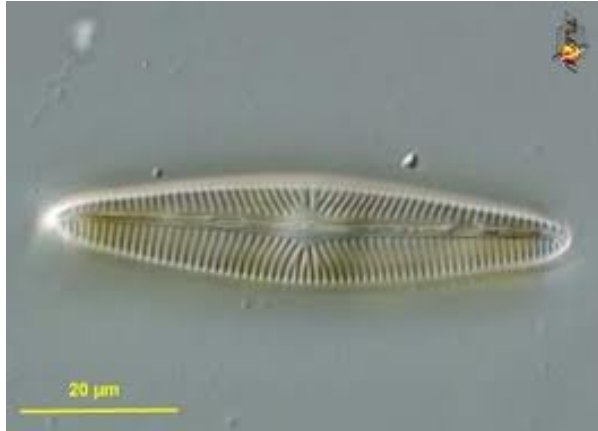


Phytoplankton Identification Key

Samples from Gull Lake: Hickory Corners, Michigan



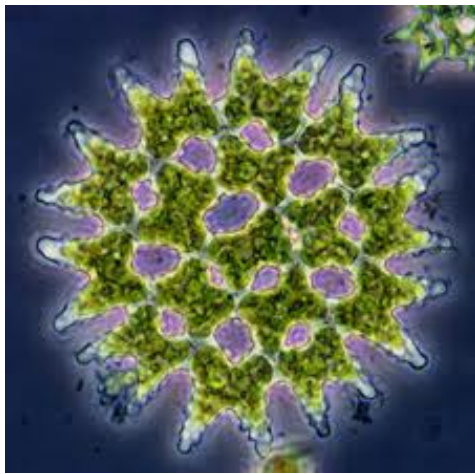
Pennate Diatom (General Name)



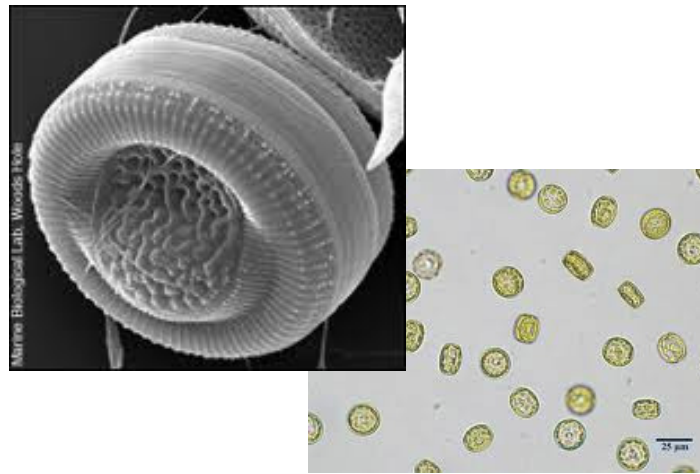
Ankistrodesmus: needle-like



Closterium: curved needle, two halves



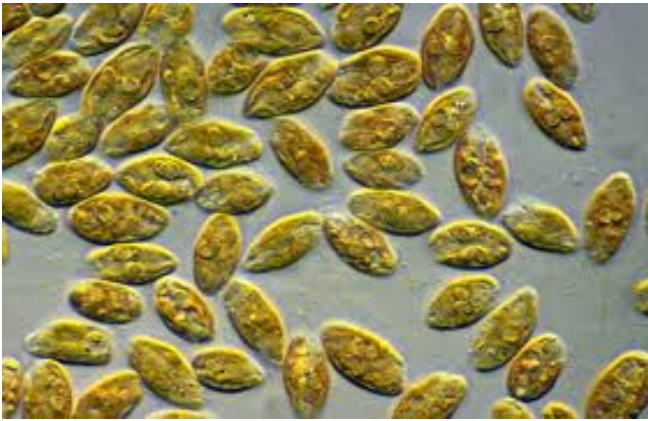
Pediatrum: colonial, "lace"



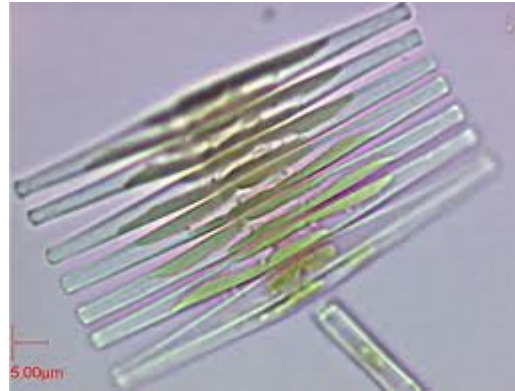
Cyclotella: circular diatom, looks like a tire



Anabaena: cyanobacteria, heterocyst



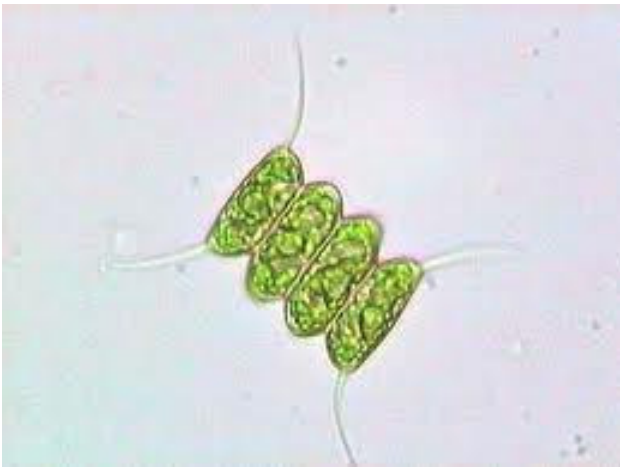
Rhodomonas



Fragilaria: colonial "pencils"



Oocystis: 4 cells in a "sac"



Scenedesmus: 4 cell colony, spines



Crucigenia: Always in 4's



Dinobryon: Golden algae,