

Buckeye Lady Beetle Blitz Identification Guide

Mary Gardiner, Department of Entomology, The Ohio State University, OARDC, Wooster, OH
ladybeetles@osu.edu www.ladybeetles.osu.edu 330-263-3643

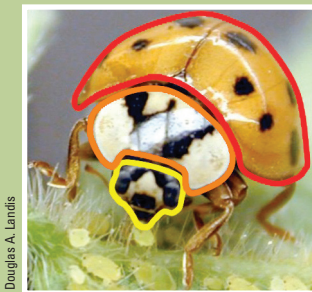


Ladybugs, or lady beetles are beneficial predators that feed on aphids and other soft-bodied pests. In Ohio, several exotic and native species are present. Exotic species were introduced into the United States, either intentionally to provide pest control or accidentally through international trade. In recent years, many native Ohio lady beetles have declined. The loss of these species is detrimental to both biodiversity and pest control. We are asking for your help to census current populations of native and exotic lady beetles. By participating in the collection of lady beetle data, you are providing a critical step toward their conservation.

Using this guide: This card provides key features needed to identify 14 species of lady beetles that may be found in home landscapes. For each species the most important features to look for are bolded. Size is indicated as a circle next to the name of each species. Note that some of these species are very small, so look carefully for key features!

How to Identify Lady Beetles

All lady beetles have three body segments: a **head**, **pronotum**, and abdomen. The abdomen is covered by the **wing covers** or elytra. The **head** is the front segment; it is very small and difficult to see. The **pronotum** is the middle segment, which looks like the head from above.



Patterns on the **pronotum** such as spots, bars, shapes, and even letters (see the W on the photo above!) are used for identification. Lady beetles have hard **wing covers**, which may be red, yellow, orange, or black, and are often, but not always spotted. Wing cover color and the number and arrangement of spots are often helpful in identifying lady beetles.

Introduced Lady Beetle Species

Four species of exotic lady beetles are present in Ohio.



Douglas A. Landis



Paul Pratt



Tom Murray



Multi-colored Asian

Round. Many color forms exist, ranging from yellow to red. Diagnostic feature is a **white pronotum with a black M or W pattern depending on the viewing direction**. May or may not have black spots on wing covers. This is the species that aggregates in homes during winter.

Common

Variegated

Oval and red. **Distinctive pronotum with two small white spots and white border along front edge**. Border may extend back between the spots (examples of variability shown). Wing covers with variable spot number.

Somewhat common



Marlin E. Rice



Bruce Martin / citrusimage.com

Seven-spotted

Round and red. Pronotum is black with large white spots on each side. **Seven black spots total—three on each wing cover and one central spot at the base of the pronotum**.

Common



W. Robert J. Funnell

Fourteen-spotted

Round and yellow. Pronotum is black with white along the front edge. Approximately **14 black spots**, many connected. **Spots are square-shaped**.

Somewhat common

Native Lady Beetle Species

Ohio has many species of native lady beetles; in this study we are interested in 10 species which are found within agricultural habitats. Many native species have declined following the introduction of exotic species. As a volunteer, your efforts will contribute to understanding the extent of this decline and the development of conservation strategies.



Joyce Gross

Convergent

Oval, red. Pronotum with **two white dashes angled towards each other forming a "V" pattern**. Each wing cover with 6 spots; fewer may be present.
Decreasingly common



Merlin E. Rice

Thirteen-spotted

Oval and **somewhat flattened**, red to orange. **Pronotum is mostly black with red along edges**. Each wing cover has **six spots, with a central spot at the base of the pronotum**.
Rare



Tom Murray

Twice-stabbed

Very small and round with a black pronotum and **black wing covers**. **Each wing cover has a central red spot**.
Rare



Tom Murray

Parenthesis

Oval, red to orange. Pronotum black with white along the front edge. **Parenthesis-shaped spot** on hind portion of each wing cover. Sometimes parenthesis does not completely connect.
Somewhat common



Christopher Schuster

Two-spotted

Round and red. **Wing covers each with one black central spot**.
Rare



Tom Murray

Orange-spotted

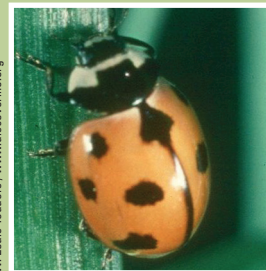
Very small and easy to miss on sticky cards! Pronotum black with orange spot on each side. **Black wing covers each with 5 orange spots**.
Rare



Tom Murray

Polished

Small and round. Pronotum black with a white border and two white lobes which extend back. **Red to orange wing covers with no spots**.
Common



W. Louis Teeders / www.discoverlife.org

Nine-spotted

Round, orange to red. Very similar to 7-spotted lady beetle but with **4 spots on each wing cover and one central spot**.
Exceedingly rare



Tom Murray

Pink

Oval and somewhat flattened, bright red to pink. **Pronotum has two black triangular spots**. **Six spots on each wing cover**.
Common



Tom Murray

Three-banded

Round, red to orange. Pronotum black with white along front edge. **Wing covers each with three black bars**.
Rare

Mystery Lady Beetle?

If you find a lady beetle on your sticky trap that is not shown here, please mark it as "other lady beetle" on the data sheet. If you would like to view additional lady beetle images, as well as lady beetle "look-alikes," or would like to learn more about these beneficial insects, check out our web site: ladybeetles.osu.edu

Thank you for your participation!